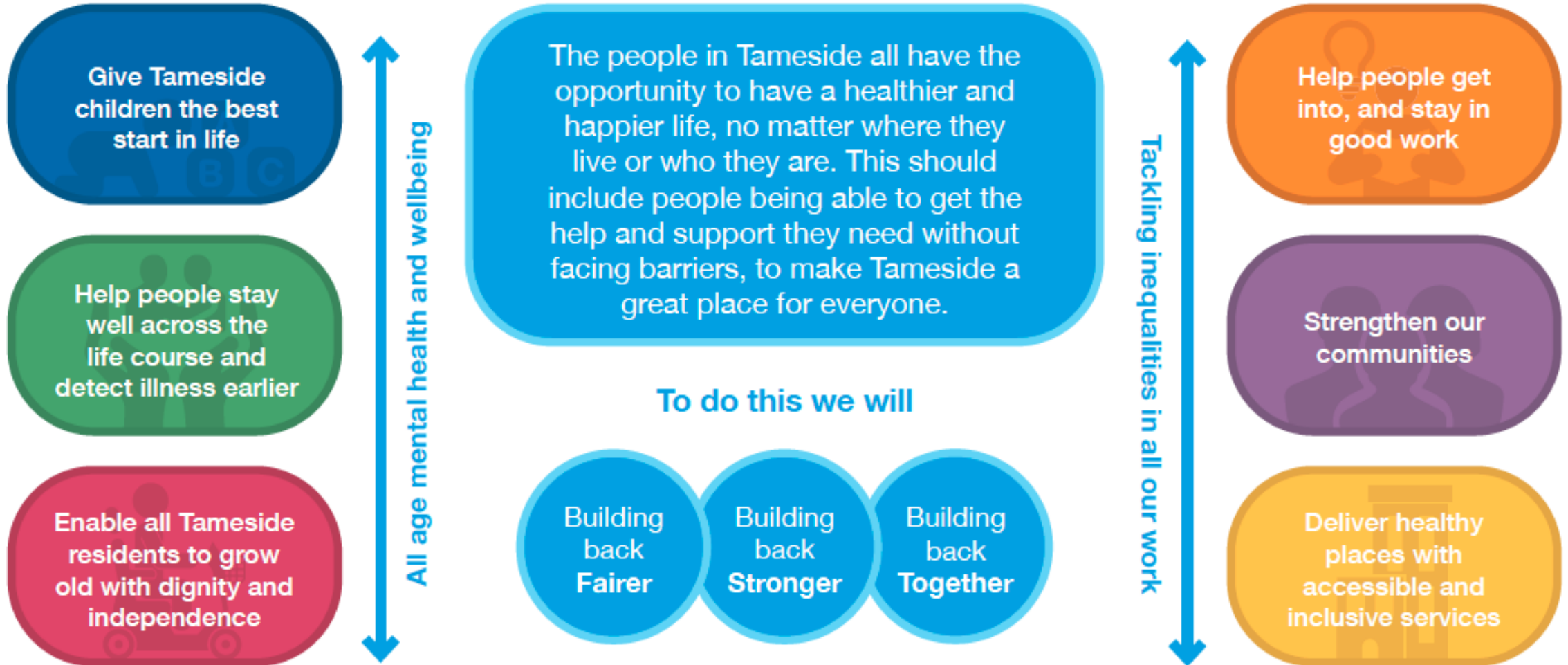


Building Back Fairer, Stronger, Together.

**Tameside Joint Health & Wellbeing
Strategy and Locality Plan
2023-2028**

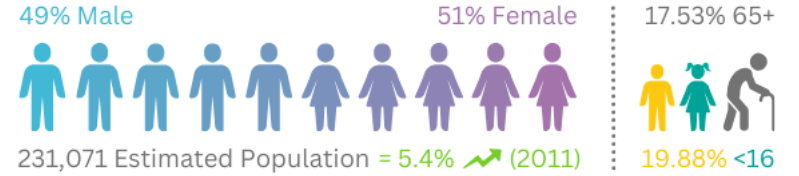


TAMESIDE SHARED VISION





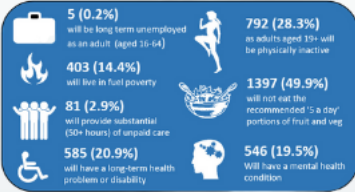
Tameside in Context 2023



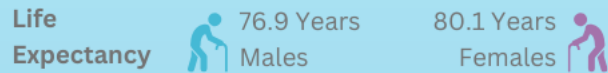
Help people stay well across the life course and detect illness earlier



Third highest rate of **alcohol related cancers** in country
Early preventable deaths are almost 50% higher in Tameside compared to the national average.



Enable all Tameside residents to grow old with dignity and independence



13.1% aged 66 yrs or older lives alone
1,989 per 100,000 aged 66 yrs or over have been injured in a fall
83.3% of care homes in Tameside are rated as good or outstanding by CQC
Tameside population aged 65 yrs. plus has seen a 18.4% increase since 2011

Give Tameside Children the best start in life

- 39.2% of children in year 6 classified as overweight / obese
- 8.4% of children aged 5-17 in Tameside have a diagnosed mental health disorder
- Highest admission rate for under 19s for asthma in the country

Deliver Healthier places with accessible and inclusive services

43% of people live in areas in 20% most deprived nationally



Take-away Density - 143 take-aways per 100,000 population - highest in GM, 17th Nationally

Air Pollution - Tameside has the 2nd highest level of fine particulate matter in GM (indicator of poorer air quality)

Help people get into, and stay in good work



28.5% of jobs in Tameside paying below the living wage (2021) the highest rate in GM, equating to approx. 13,000 jobs

9% of the working population working in health and social care
2% had sickness absence from work in last week

Strengthen our Communities



In every 1000 people in TAMESIDE:

- 20 have been supported by social prescribing in the last 12 months
- 180 people are living in poverty
- 140 are experiencing fuel poverty
- 90 people have been a victim of crime
- 19 are living in temporary accommodation
- 37 have been a victim of domestic abuse
- 49 have been a victim of violent crime



The Voice of Tameside Residents

...residents are
concerned about
poverty and climate
change

...more job
opportunities that
match skills

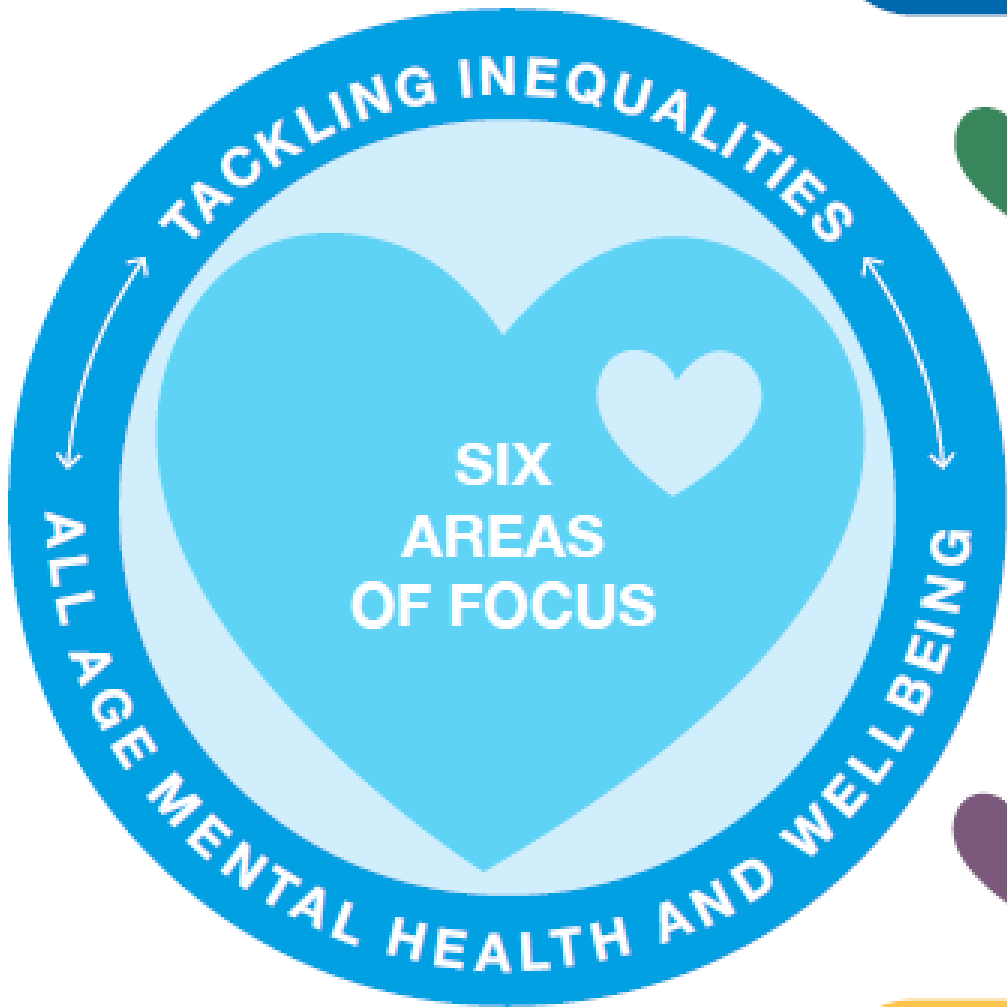
...charities
should be
supported


...recognise that local
and national funding is
a challenge


...satisfied with
Tameside as a place to
live


...want to see
improved access
to mental health
support


SIX AREAS OF FOCUS




Give Tameside children the best start in life 

Help people stay well across the life course and detect illness earlier 

Enable all Tameside residents to grow old with dignity and independence 

Help people get into, and stay in good work 

Strengthen our communities 

Deliver healthy places with accessible and inclusive services 

Building
back
Fairer

Building
back
Stronger

Building
back
Together

Health Inequalities...

“avoidable,
unfair and
systematic
differences in
health between
different groups
of people”



- **FAIRER** - Tackling Inequalities (Inequalities Reference Group; *GM Fairer Health for All* framework; systematic approaches)
- **STRONGER** – Covid-19 recovery; prioritising prevention; enablers; needs assessments
- **TOGETHER** – Working with the whole system (inc. VCFSE); working with communities; links to Greater Manchester ICP



ANY QUESTIONS?

Please read the strategy

[Building-Back-Fairer-Stronger-Together-Tameside-Joint-Health-and-Wellbeing-Strategy-and-Locality-Plan-23-28.pdf](#)